

HRIDAY **CONCLAVE 2024**



Advanced Echo workshop on TEE

EVENT REPORT



TEE Workshop

"TEE Workshop" was held on 19th & 20th July, 2024 at Narayana Institute of Cardiac Sciences, NH Health City, Bengaluru. It was organized by the CME Foundation of India (CMEFI).

The sole objective was to bring leading KOLs amongst General Physician and Cardiologists on one platform and discuss their clinical experiences and expertise in the screening and treatment of advanced echocardiography techniques.

The Introductory speech was given by CMEFI.

CMEFI emphasized the main role played by the CME Foundation of India and we all know how important it is to spread the knowledge known only to a select few to the practising doctors at large.

Date : 19th & 20th July, 2024

**Venue : Narayana Institute of Cardiac Sciences,
NH Health City, Bengaluru**

Total Participants : 18

Agenda



DAY 1 – 19th July, 2024



09:00 a.m. to 6:00 p.m.

Topic	Timings
Welcome & Registration	09:00 a.m. to 10:00 a.m.
Lecture: Fundamentals of Transesophageal Echocardiogram (TEE)	10:00 a.m. to 11:30 a.m.
Hands-on Session 1: TEE Simulator Practice – Basic Techniques and Probe Manipulation	11:30 a.m. to 01:00 p.m.
Lunch Break	01:00 p.m. to 02:00 p.m.
Lecture 2: Understanding EchoPAC Clinical Workstation Software	02:00 p.m. to 03:30 p.m.
Hands-on Session 2: Introduction to EchoPAC – Navigation and Basic Analysis of Echocardiographic Images	03:30 p.m. to 05:00 p.m.
Interactive Case Discussions – Part 1: Application of TEE and EchoPAC in Clinical Scenarios	05:00 p.m. to 06:00 p.m.



DAY 2 – 20th July, 2024



09:00 a.m. to 6:00 p.m.

Topic	Timings
Recap of Day 1 and Introduction to Day 2	09:00 a.m. to 10:00 a.m.
Lecture 3: Advanced Techniques in Echocardiography – Speckle Echo/2D Strain Analysis	10:00 a.m. to 11:30 a.m.
Hands-on Session 3: Advanced TEE Simulator Practice – Speckle Echo/2D Strain Analysis and Interpretation	11:30 a.m. to 01:00 p.m.
Lunch Break	01:00 p.m. to 02:00 p.m.
Lecture 4: Clinical Application of Echo in Routine LV Systolic Function Assessment	02:00 p.m. to 03:30 p.m.
Hands-on Session 4: Practical Application of Echo in LV Systolic Function Assessment – Quantitative Analysis and Reporting	03:30 p.m. to 05:00 p.m.
Interactive Case Discussions – Part 2: Complex Case Scenarios and Decision Making	05:00 p.m. to 06:00 p.m.
Vote Of Thanks	CMEFI

Summary of Workshop

- The CME Workshop titled "TEE Workshop" was conducted at the Narayana Institute of Cardiac Sciences, NH Health City, Bengaluru. It aimed to bring together well-known Consulting Physicians on one platform to discuss their clinical experiences and expertise in the screening and treatment of advanced echocardiography techniques.
- **CMEFI** welcomed the forum and shared a few thoughts on the topics that were on the agenda.
- Dr. Satish Govind conducted a comprehensive two-day workshop focused on advanced echocardiography techniques. The workshop included lectures and hands-on sessions using the Heartworks Cardiology Simulator (Serial No. 0176) for practical experiments on an artificial heart.

Day 1

- **Lecture: Fundamentals of Transesophageal Echocardiogram (TEE)**

Govind provided an overview of TEE, emphasizing its importance in diagnosing cardiac conditions. He explained TEE's principles, advantages over other imaging techniques, and common clinical indications for its use. This session aimed to build a solid foundation for understanding how TEE works and its role in patient care.

- **Hands-on Session 1: TEE Simulator Practice - Basic Techniques and Probe Manipulation**

Participants had the opportunity to practice basic TEE techniques using the Heartworks Cardiology Simulator. They learned to manipulate the TEE probe to obtain clear images and identify anatomical structures. This hands-on experience was crucial for developing the skills needed for practical TEE imaging.

- **Lecture 2: Understanding EchoPAC Clinical Workstation Software**

In this lecture, Dr. Govind introduced the EchoPAC Clinical Workstation Software, a powerful tool for analyzing echocardiographic images. He explained the software's features, user interface, and how it enhances echocardiography's diagnostic capabilities by providing advanced image analysis and quantification tools.

- **Hands-on Session 2: Introduction to EchoPAC – Navigation and Basic Analysis of Echocardiographic Images**

Participants learned how to navigate the EchoPAC software and perform fundamental analyses of echocardiographic images. This session included step-by-step instructions on loading images, adjusting settings, and conducting simple measurements, with the goal of familiarizing participants with the software and its practical applications.

- **Interactive Case Discussions - Part 1: Application of TEE and EchoPAC in Clinical Scenarios**

Dr. Govind led discussions on real-world clinical cases using TEE and EchoPAC. Participants analyzed these cases, discussed their findings, and shared insights. This interactive session helped reinforce the day's learning by applying theoretical knowledge to practical scenarios.

Day 2

- **Recap of Day 1 and Introduction to Day 2**

The second day started with a recap of the key points from Day 1, followed by an introduction to the agenda for Day 2. This helped ensure continuity and set the stage for the more advanced topics.

- **Lecture 3: Advanced Techniques in Echocardiography – Speckle Echo/2D Strain Analysis**

Dr. Govind discussed advanced echocardiographic techniques, focusing on Speckle Echo and 2D Strain Analysis. He explained how these techniques provide detailed information about myocardial function and deformation, offering insights into cardiac mechanics that are unavailable through conventional echocardiography.

- **Hands-on Session 3: Advanced TEE Simulator Practice – Speckle Echo/2D Strain Analysis and Interpretation**

Participants practiced using the simulator to perform Speckle Echo and 2D Strain Analysis. They learned how to interpret the results and understand what different patterns and measurements indicate about myocardial health and function. This session aimed to enhance their skills in advanced echocardiographic analysis.

- **Lecture 4: Clinical Application of Echo in Routine LV Systolic Function Assessment**

This lecture focused on the clinical application of echocardiography for assessing left ventricular (LV) systolic function. Dr. Govind covered various echocardiographic parameters used to evaluate LV function, their significance, and how they guide clinical decision-making in managing patients with heart disease.

- **Hands-on Session 4: Practical Application of Echo in LV Systolic Function Assessment - Quantitative Analysis and Reporting**

Participants applied their knowledge in a practical session, performing quantitative analyses of LV systolic function using echocardiography. They learned how to generate comprehensive reports with detailed measurements and interpretations, which are essential for accurate diagnosis and treatment planning.

- **Interactive Case Discussions - Part 2: Complex Case Scenarios and Decision Making**

The workshop concluded with another round of interactive case discussions, focusing on complex clinical scenarios. Participants analyzed challenging cases, discussed potential diagnostic and treatment strategies, and learned how to make informed decisions based on echocardiographic findings.

- The two-day workshop provided participants a thorough understanding of fundamental and advanced echocardiography techniques. They gained practical skills and knowledge applicable to their clinical practice through lectures and hands-on sessions. Using the Heartworks Cardiology Simulator for hands-on experiments greatly enhanced the learning experience, offering a realistic and interactive platform for skill development.

- **In the end of this CME, the CME Foundation of India extended, its sincere vote of thanks to the attending delegates and acknowledged the academic industry partners for their valuable support and contribution to the success of this conclave.**

1. Aristo Pharmaceuticals Pvt. Ltd.

Snapshots of Success

Welcome to the TEE Workshop



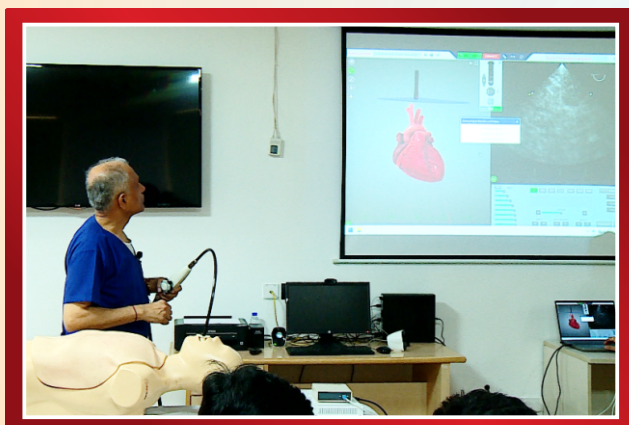
Registration Counter



Lecture: Fundamentals of Transesophageal Echocardiogram (TEE)



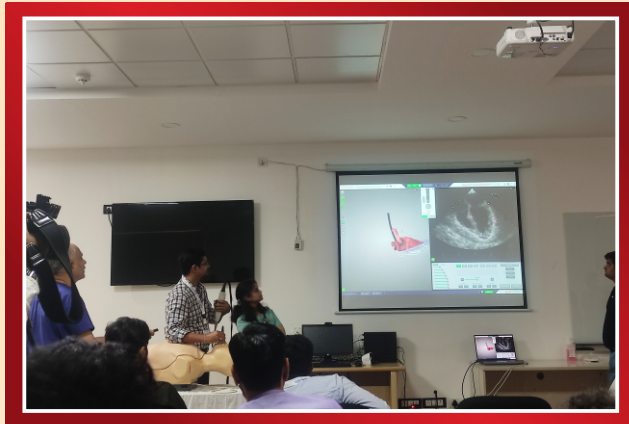
Hands-on Session TEE Simulator Practice - Basic Techniques and Probe Manipulation



Hands-on Session Introduction to EchoPAC – Navigation and Basic Analysis of Echocardiographic Images



Hands-on Session 3: Advanced TEE Simulator Practice – Speckle Echo/2D Strain Analysis and Interpretation



Delight Attendees Through an Exceptional Workshop Experience



Branding Opportunity

